



# BFV

用科技和服务缔造品牌  
With science and technology kimono  
devote one's efforts to create chop

 水闸门  
PENSTOCK



# BFV



● 主要技术参数 Main performance

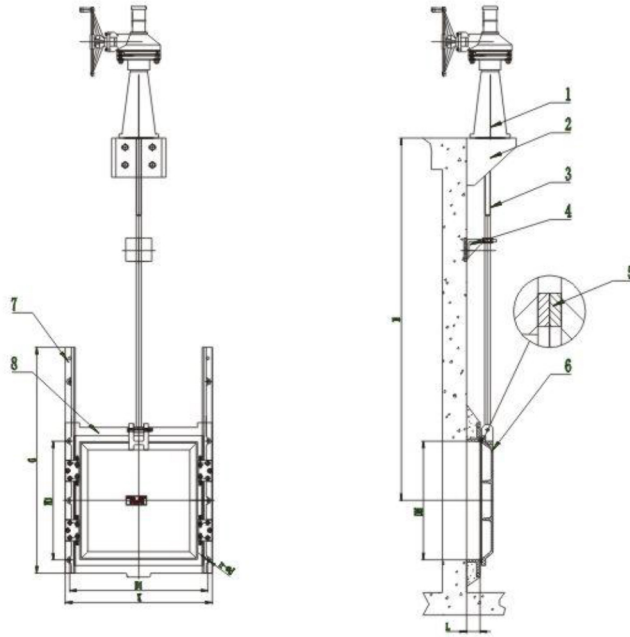
产品 Product	渗水量 Water seepage (L/min)		最大水头 Max. Head water	介质 Media	安装 Installation	门框距 边壁距离 Distance between frame to wall
	正向Front	反向Back				
铸铁镶铜方闸 Brass inlay square sluice gate valve	0.72	1.25	正向Front ≤10m; 反向Back ≤2.5m	水或污水 Water, sewage Water	铅垂 Vertically	>300
双向铸铁镶铜圆闸 Bidirectional round sluice gate valve	0.72	0.72				
碳钢不锈钢闸门 Bidirectional square sluice gate valve	0.72	0.72	正向Front ≤10m; 反向Back ≤2m			



● 主要零部件材料 Main parts materials

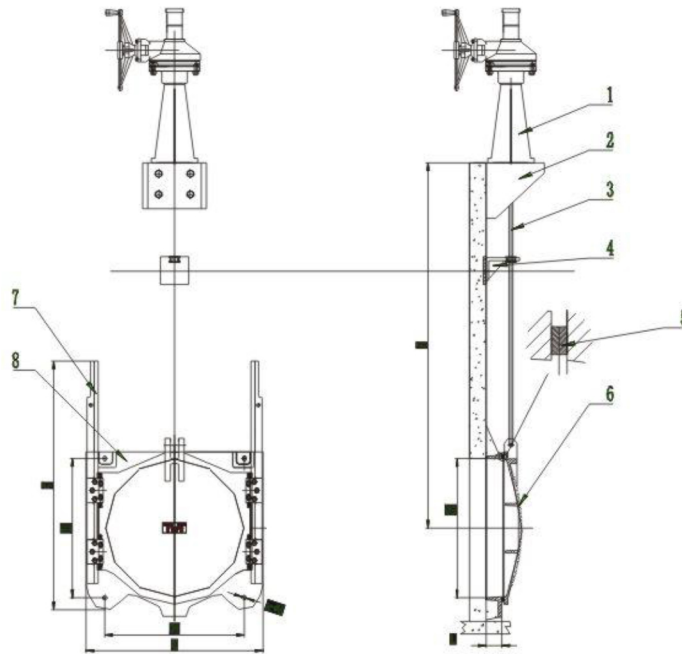
No.	名称 Name	铸铁闸门材料 Material	焊接闸门材料Material
1	启闭机Actuator	Combination	电动/气动Electric / Pneumatic
2	支架Guide Support	Carbon steel / Stainless steel	Carbon steel / Stainless steel
3	阀杆Lead screw	不锈钢Stainless steel	不锈钢Stainless steel
4	导向架Guide Frame	Carbon steel / Stainless steel	Carbon steel / Stainless steel
5	密封Sealing	黄铜/Brass	丁腈橡胶/乙丙橡胶NBR/EPDM
6	阀板Gate	球墨铸铁Ductile iron	碳钢/不锈钢Carbon steel / 304 / 316
7	导轨Frame	球墨铸铁Ductile iron	碳钢/不锈钢Carbon steel / 304 / 316
8	阀体Body	球墨铸铁Ductile iron	碳钢/不锈钢Carbon steel / 304 / 316





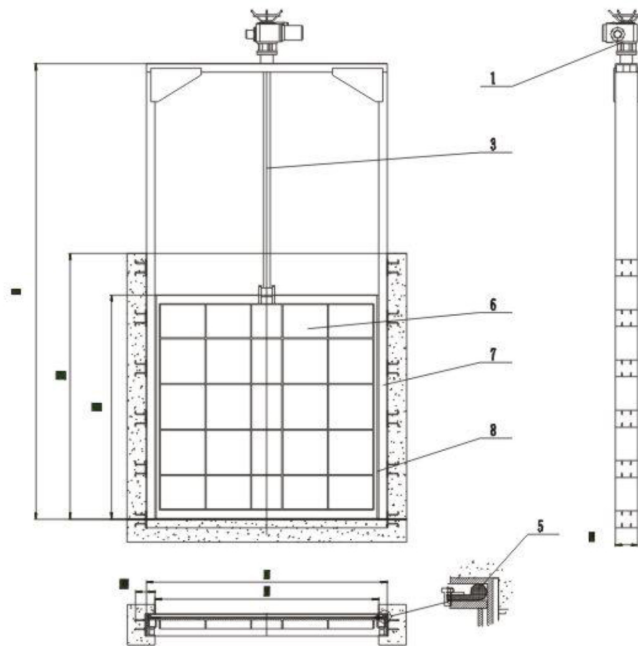
● 铸铁方闸基本尺寸Basic Main Dimension:

DN×DN	DN	K	D1	G	H1	L	n-φd	H
300×300	300	456	416	685	416	110	4-18	According to the customer's requirement
400×400	400	556	546	835	546		4-18	
500×500	500	656	616	1060	616		4-18	
600×600	600	790	750	1160	750		4-18	
700×700	700	890	850	1260	850		4-22	
800×800	800	1010	960	1450	960		4-22	
900×900	900	1110	1060	1600	1060		4-22	
1000×1000	1000	1210	1160	1900	1160		4-22	
1200×1200	1200	1430	1370	2765	1370		4-22	
1400×1400	1400	1650	1580	3315	1580		4-22	
1500×1500	1500	1750	1680	3415	1680		4-26	
1600×1600	1600	1850	1780	3515	1780		4-26	
1800×1800	1800	2050	1980	3815	1980		4-26	
2000×2000	2000	2270	2200	4150	2200		4-26	
2200×2200	2200	2500	2400	4450	2400		4-32	
2400×2400	2400	2700	2600	5135	2600		4-32	
2500×2500	2500	2800	2700	5250	2700		4-32	
2600×2600	2600	2900	2800	5370	2800		4-32	
2800×2800	2800	3100	3000	5450	3000	4-32		
3000×3000	3000	3300	3200	6175	3200	4-32		



● 铸铁圆闸基本尺寸 Cast iron gate round basic dimensions

DN	K	D1	G	H1	L	n-φd	H
300	494	300	565	300	110	4-18	According to the customer's requirement
400	586	400	680	400		4-18	
450	636	450	745	450		4-18	
500	696	500	810	500		4-18	
600	826	600	1060	600		4-22	
700	940	700	1140	700		4-22	
800	1025	800	1270	800		4-22	
900	1160	900	1480	900		4-22	
1000	1250	1000	1700	1000		4-22	
1200	1450	1200	2000	1200		4-22	
1400	1630	1570	3020	1570		4-26	
1500	1750	1680	3235	1680		4-26	
1600	1850	1780	3410	1780		4-26	
1800	2050	1980	3755	1980		4-26	
2000	2270	2200	4220	2200		4-32	
2200	2520	2420	4480	2420		4-32	
2400	2720	2620	4740	2620		4-32	
2500	2820	2720	4940	2720		4-32	
2600	2920	2820	5140	2820		4-32	
2800	3120	3020	5540	3020		4-32	
3000	3320	3220	5940	3220	4-32		



● 焊接闸门基本尺寸 Basic Main Dimension

DN×DN	A	B	L1	B1	B2	H	L	H
600×600	600	720	180	600	900	1200	140	According to the customer's requirement
700×700	700	820	180	700	1050	1400	140	
800×800	800	920	180	800	1200	1600	140	
900×900	900	1020	180	900	1350	1800	140	
1000×1000	1000	1120	180	1000	1500	2000	140	
1200×1200	1200	1320	180	1200	1800	2400	140	
1400×1400	1400	1520	180	1400	2100	2800	140	
1500×1500	1500	1620	180	1500	2250	3000	140	
1600×1600	1600	1720	180	1600	2400	3200	140	
1800×1800	1800	1950	180	1800	2700	3600	200	
2000×2000	2000	2150	180	2000	3000	4000	200	
2200×2200	2200	2350	180	2200	3300	4400	200	
2400×2400	2400	2560	180	2400	3600	4800	250	
2500×2500	2500	2660	180	2500	3750	5000	250	
2600×2600	2600	2760	180	2600	3900	5200	250	
2800×2800	2800	2960	180	2800	4200	5600	250	
3000×3000	3000	3160	180	3000	4500	6000	250	
3200×3200	3200	3360	180	3200	5800	6400	250	
3400×3400	3400	3560	180	3400	5100	6800	250	
3600×3600	3600	3760	180	3600	5400	7200	250	
3800×3800	3800	3960	180	3800	5700	7600	250	
4000×4000	4000	4160	180	4000	6000	8000	250	



● 安装步骤 Installation steps:

1. 检查预埋件、预留槽及孔的位置，保证其平面度和垂直度为1.5-3%范围内。
  2. 根据闸门的大小、划安装线及钻墙面孔。
  3. 用膨胀螺栓将门框固定在墙上，并检查安装是否符合要求（平面度和垂直度0.5-1%）。
  4. 将已调整好的闸门进行二次灌浆，确保闸框与墙面密封，以防渗漏。
  5. 当螺杆细长比
  6. 安装操作台、螺杆、轴导架，应保证接杆、操作台中心成水平。
1. Check the location of embedded parts, reserved slot and hole to make sure the angle of horizontal plane and perpendicularity is less than 1.5-3%.
  2. According to the size of valve to mark the assembling line and drilling holes.
  3. Use expansion anchor bolt to fix the frame to the wall and check the angle of fitness & perpendicularity less than 0.5 ~ 1%.
  4. Secondary grouting the adjusted pen-stock to make sure the seal of wall & frame.
  5. Install the operating floor, lead screw to make them in the same line.
  6. Connect the electrical or pneumatic air source for motorized or pneumatic actuator.

● 安装使用时的注意事项 Installation Instruction:

1. 闸门与启闭机提升杆，轴导架配套使用。
  2. 保证轴导架孔中心线与启闭机中心线，闸门吊耳中心线重合，并尽可能地减少轴导架的数量。
  3. 保证闸板密封平面和提升杆的中心线平行，启闭装置与提升杆中心线在同一直线并保证手动提升时上下灵活。
  4. 最底部的轴导架距闸门吊耳的距离应该大于闸门的最大开启高度。
  5. 现场安装时保证导轨与密封面平行。
1. Pen-stock need to use with hoist or automatic actuator and guide support.
  2. Make sure the middle line of frame support, hoist and rifting eye are on the same
  3. Make sure the paralleled of surface of seal and middle line of screw lead.
  4. The distance from bottom of frame support to lifting eye should larger than the maximum height of open.
  5. Make sure the parallel of guide and seal.
  6. Adjust the plate wedge to make sure the seal.

● 选用须知 Selection Note:

为保证使用需要，订货时应详细注明以下事项：

1. 选用闸门时应注明闸门中心到启闭机底部平台的高度。
2. 启闭机应根据表中启闭力及自动货程度选用不同的执行机构。
3. 闸门在使用时需反向安装请注明。
4. 本公司可根据用户要求进行设计不同规格的产品。

To make sure the requirement, please note below points.

1. Please advise the height from middle of pen-stock to bottom of hoist.
2. Hoist should should choose different actuators as requirements.
3. Please note if the pen-stock install in reverse.
4. Our company can design and produce different sizes as customer?s requirements.



TRACK RECORD FOR PART OF PROJECTS							Update: 2016-2
S/N	YEAR	COUNTRY	CUSTOMER	VALVE TYPE	SIZE	RATING	MATERIALS
1	2016	Canada	Airscience Technologies Inc.	Goggle valve	DN400 & DN800	PN1.0	Carbon steel
2	2015	India	Atibir Industries Company	Butterfly valve, ball valve, gate valve, goggle valve etc.	DN50-DN2500	PN2.5, PN10, PN16	Ductile iron; Carbon steel
3	2015	Brunei	Trane Aire Sdn Bhd.	SS Sluice gate	1500*1600mm, 1800*1600mm etc.	PN1.0	Stainless steel
4	2015	Korea	YOUNGJIN CONSTRUCTION ICN	Gate valve, check valve,	DN50-DN200	PN16	Ductile iron
5	2015	Singapore	Enviro Vortex Systems Ptd Ltd.	Non Slam check valve	DN150-DN300	PN10	Ductile iron
6	2015	Laos	SMP Commerce Import & Export Co., Ltd.	Flow control valve, Strainer, Butterfly valve	DN250-DN600	PN10	Ductile iron / Carbon steel
7	2015	Albania	MARITUDA SH.P.K	Butterfly valve	DN500, DN800	PN16	Ductile iron
8	2015	Peru	Metal's Comercial Kanton S.A.C-MECKA S.A.C	Pressure reducing valve, Remote float valve etc	DN50-DN400	PN16	Ductile iron
9	2015	Israel	Tiponet Ltd	Butterfly valve	DN80-DN300	PN16	Cast iron / Ductile iron
10	2015	Malaysia	Flow Line Sales & Services Sdn Bhd	Lug butterfly valve	DN65-DN200	JIS 10K	Ductile iron
11	2015	UAE	Dutco Tennant LLC	Remote float valve, presre reducing valve	DN150-DN700	PN16	Ductile iron
12	2015	UAE	Al Dhafra Group	Pressure sustaining valve, Remote control valve	DN100-DN300	PN16	Ductile iron
13	2015	Sri Lanka	RS PROJECTS PVT. LTD.	Rubber gate vave, Foot valve, Air release valve	DN50-DN300	PN16	Ductile iron
14	2015	Korea	BL INTERNATIONAL PRECISION INDUSTRY LTD	Rubber gate valve, Flap check valve	DN80-DN300	PN16	Ductile iron
15	2015	Sri Lanka	RS Projects Pvt. Ltd.	Rubber seat gate valve, check valve, Air release valve, foot valve	DN50-DN300	PN16	Ductile iron
16	2015	UK	Utilities Valves Ltd.	U Type butterfly valves	DN500-DN1000	PN25	Ductile iron
17	2015	Tunisia	Seham Serf Tunisie	Rubber seat gate valve	DN50-DN300	PN16	Ductile iron
18	2012	HK	RINA CO. Ltd.	Round Penstock	DN600	PN1.0	Ductile iron